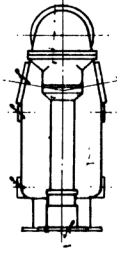
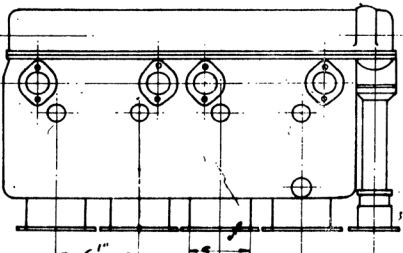
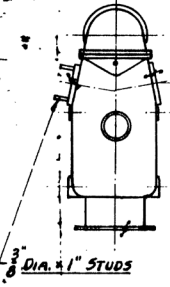
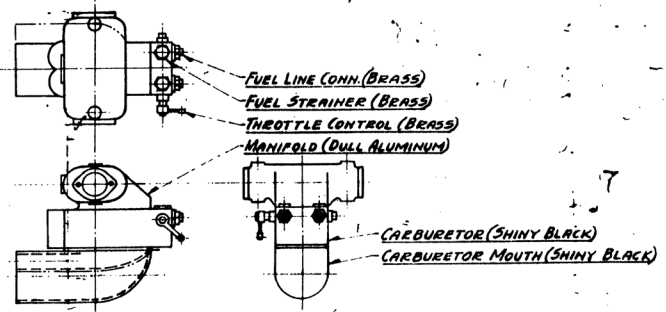


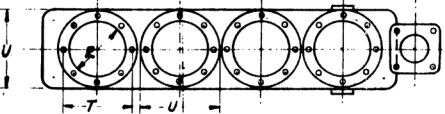
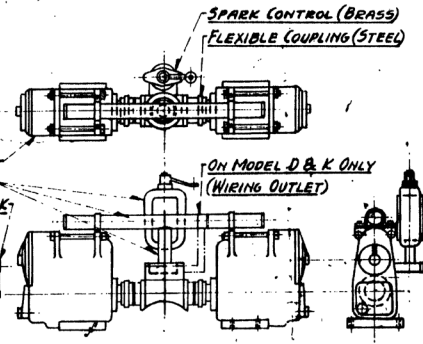
- ALL TUBING & PIPING BRASS**
INTAKE MANIFOLD ALUMINUM
VALVES (DRAIN) BRASS
SPARK PLUGS PORCELAIN WHITE
SPARK PLUG WIRES RED



ON MODELS D & K
ON MODELS A, C, E, F, H, & M

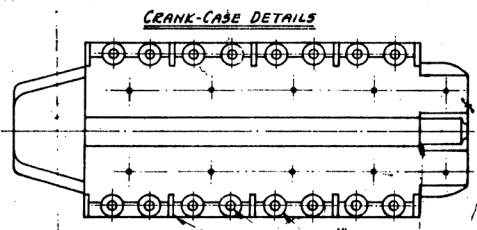
CARBURETOR & INTAKE MANIFOLD ASSEMBLY

SPARK CONTROL UNIT IS TURNED 90°
FOR INSTALLATION OF MACHINE GUN OR
CANNON IN VEE (MODELS D & K).



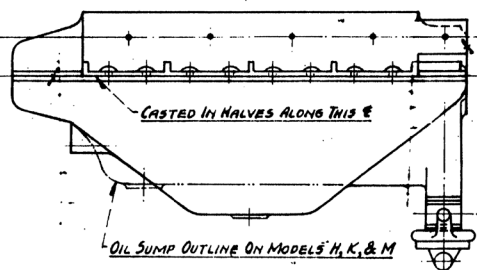
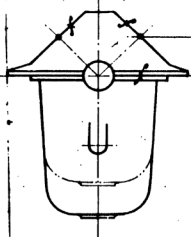
ENTIRE CYLINDER BLOCK IS
OF SHINY BAKED BLACK ENAMEL

SHINY AMBER BROWN
SHINY BLACK ENAMEL
SPARK CONTROL ON D & K
(ELONGATED SHAFT)

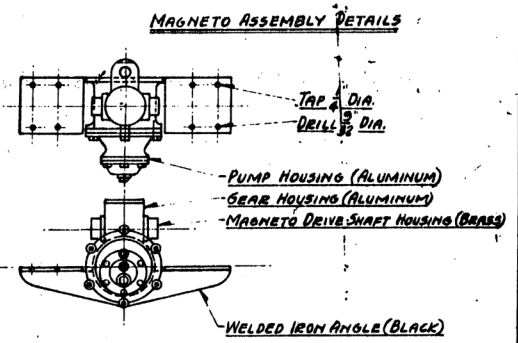
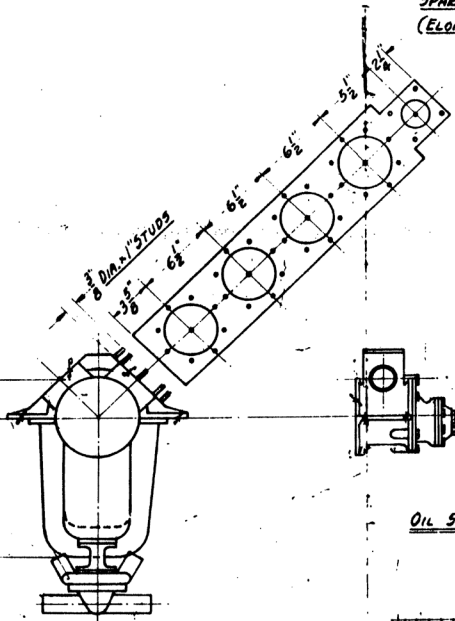
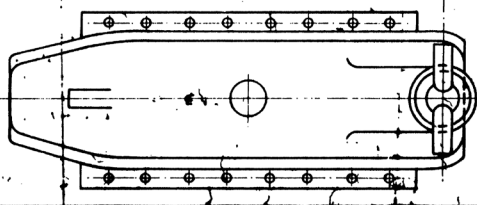


MODEL	R	S	T	U
A	4.72	5.00	5.75	6.75
C	4.72	5.00	5.75	6.75
D	4.72	5.00	5.75	6.75
E	5.33	5.50	6.375	7.375
F	4.72	5.00	5.75	6.75
H	5.51	5.75	6.50	7.50
K	5.51	5.75	6.50	7.50
M	5.51	5.75	6.50	7.50

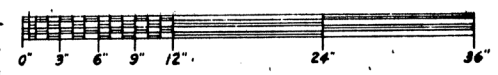
2 1/2" DIA. SPOTFACE
3/8" DIA. HOLES - ENGINE MOUNT
REINFORCEMENT RIBS



ENTIRE CRANK-CASE
ASSEMBLY IS OF
DULL ALUMINUM FINISH



OIL SCAVENGER PUMP DETAILS



AIR AGE INC., 551 FIFTH AVE., NEW YORK 17, N.Y.
 SCALE: 3/4" = 1'-0"
 DATE:
 DRAWN BY W. A. WYLAM
 GENERAL DESIGN DETAILS & SPECIFICATIONS
HISPANO-SUZA